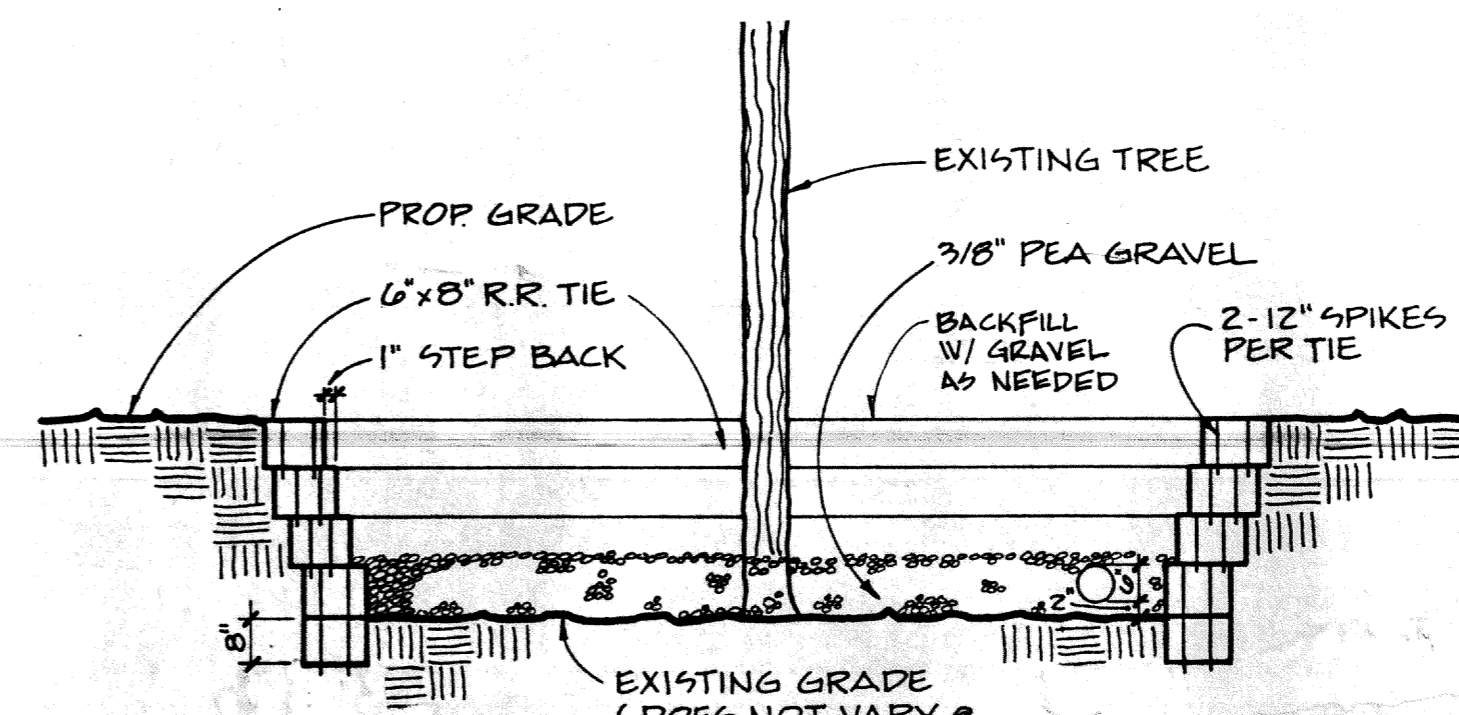
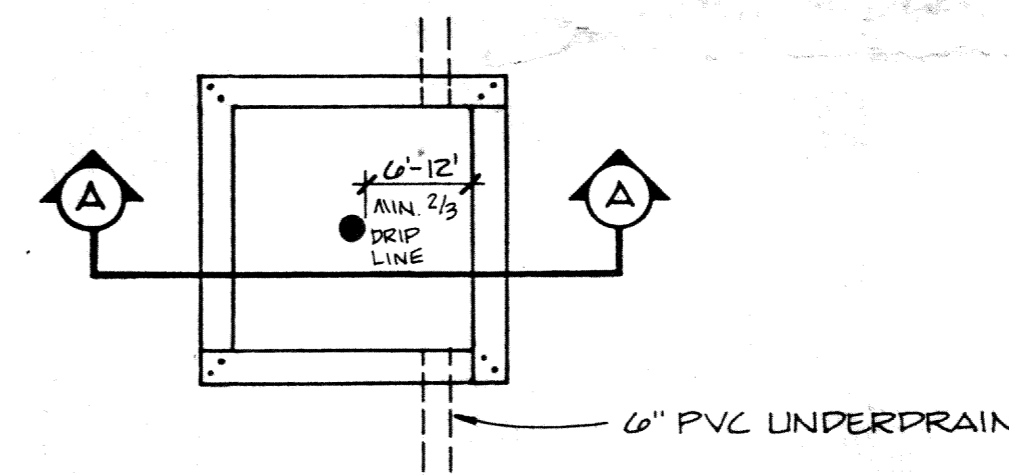


PROFILE 8A-8D

SCALE: 1" = 50' HORIZ.
1" = 5' VERT.



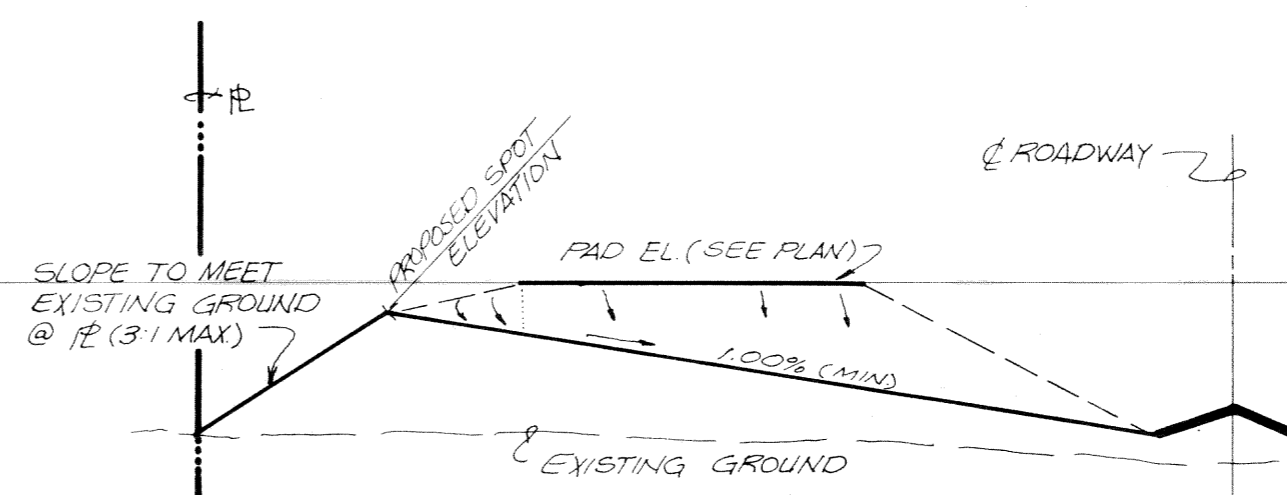
SECTION A-A



PLAN VIEW

TREE WELL DETAIL

N.T.S.



SECTION C

N.T.S.

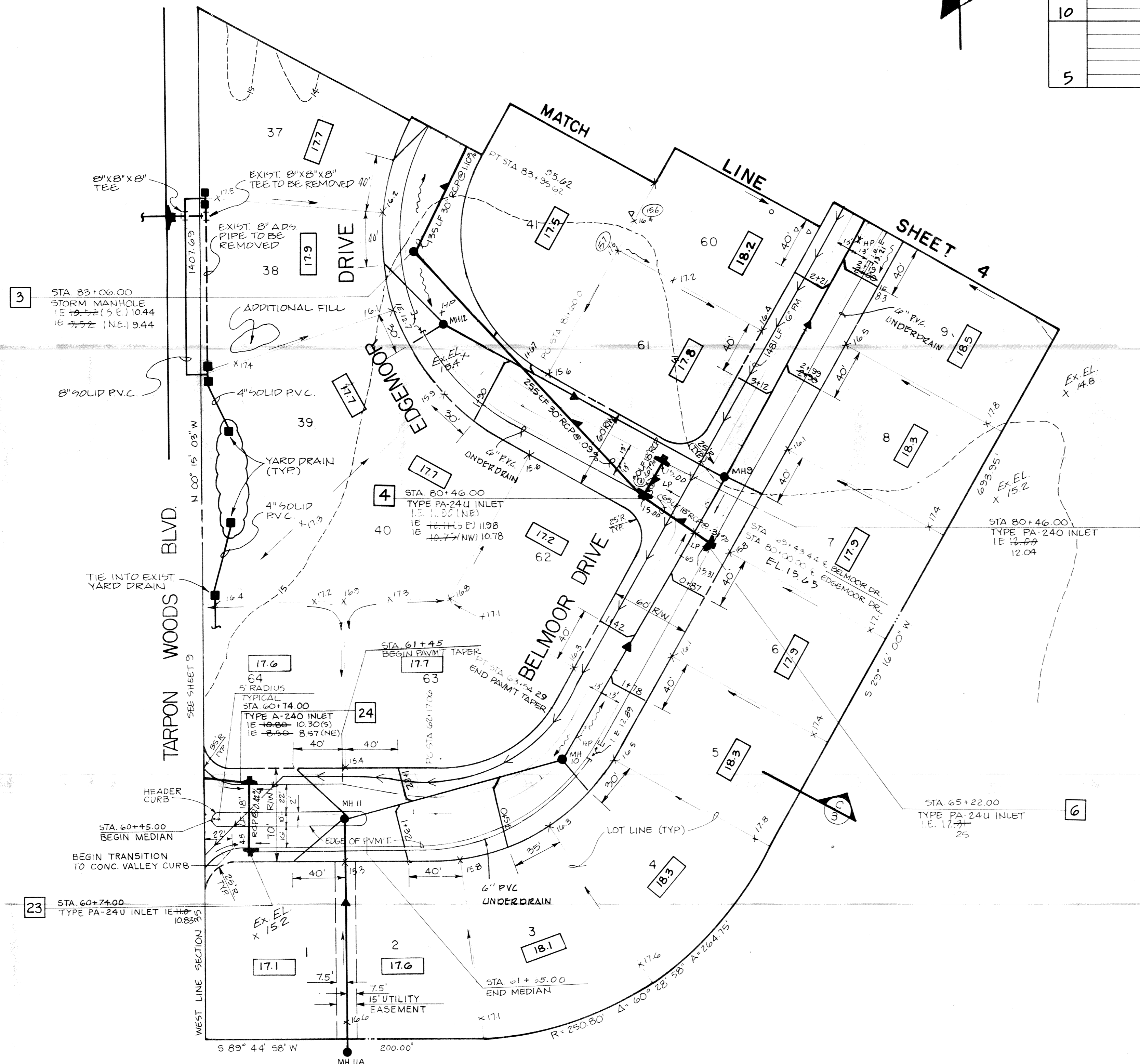
NOTE:
EXCAVATE TRENCHES WITH SIDE WALLS AS NEAR VERTICAL AS POSSIBLE.

TYPICAL UNDERDRAIN SECTION

B-19 1-24-83

LEGEND		EXISTING
N/A	CONTOUR	(5)
x 17.6	SPOT ELEVATION	(5)
x ~~~~	DRAINAGE FLOW	N/A
— —	SWALE	N/A
x —>	FLOW DIRECTION	N/A
— —	STORM SEWER	N/A
— —	STORM SEWER MANHOLE	N/A
— —	STORM INLET	N/A
— —	FLARED END SECTION	N/A
— —	REINFORCED CONC. JACKET	N/A
— —	SANITARY SEWER	N/A
— —	SANITARY SEWER MANHOLE	N/A
— —	SANITARY LATERAL	N/A
— —	FORCE MAIN	N/A
— —	TOP OF BANK	N/A
16.5	FINISH FLOOR ELEVATION	N/A
— —	EASEMENTS	N/A
— —	TREE BARRICADE	N/A

- GENERAL NOTES**
- ALL ELEVATIONS REFER TO NATIONAL GEODETIC VERTICAL DATUM.
 - THE LOCATION OF EXISTING UTILITIES ARE APPROXIMATE AS SHOWN AND IT IS THE CONTRACTOR'S RESPONSIBILITY TO DETERMINE THE EXACT LOCATION OF THE UTILITIES PRIOR TO CONSTRUCTION IN THEIR VICINITY.
 - THE CONTRACTOR SHALL NOTIFY THE UTILITY COMPANIES IN THE AREA BEFORE BEGINNING CONSTRUCTION.
 - ALL UNDERGROUND UTILITIES MUST BE INSTALLED BEFORE BASE & SURFACE ARE CONSTRUCTED.
 - SPECIAL CARE IS TO BE TAKEN SO TREES REMAIN UNHARMED DURING CONSTRUCTION.
 - ALL INTERSECTION EDGE OF PAVEMENT RADII ARE 25' UNLESS OTHERWISE NOTED ON PLAN.
 - ALL PRACTICABLE AND NECESSARY EFFORT SHALL BE TAKEN DURING CONSTRUCTION TO CONTROL AND PREVENT EROSION AND TRANSPORT OF SEDIMENT TO SURFACE DRAINS.
 - ALL PIPE LENGTHS ARE PLUS OR MINUS.
 - ALL SANITARY SEWER LINES ARE PVC OR AS NOTED ON PLANS.
 - SEWER LINES PLACED WITH LESS THAN 18" MINIMUM VERTICAL SEPARATION CROSSING WATER LINES OR STORM LINES SHALL HAVE 20 LF OF DUCTILE IRON SANITARY SEWER CENTERED ON THE CONFLICT.
 - CONFLICTS OF WATER AND UNDERDRAIN SYSTEMS TO BE RESOLVED BY ADJUSTING WATER LINES AS NECESSARY.
 - PIPE MEASUREMENTS ARE TO CENTER OF STRUCTURES.



Post, Buckley, Schuh & Jernigan, Inc.
CONSULTING ENGINEERS and PLANNERS

RIDGEMOOR PHASE - 1
SINGLE FAMILY (64 Lots)
U.S. HOME CORPORATION

PAVING, GRADING, STORM SEWER
&
SANITARY SEWER SITE PLAN

NO.	DATE	REV. BY	REV. FOR	REMARKS
1	11-9-85	REV PER PINELLAS CNTY ENV. MGMT		REMARKS
2	10-31-85	REV. WATER RUN-OFF & ADD DETAILS		
3	2-14-85	ADDED RECORD DATA		
4	8/6/84	ADDED SECTION "C"		
5	6-22-84	ADDED EX. EL. ADJACENT PROPERTY		
6	6-7-84	ADDED SANITARY SEWER & MH IIA		

SHEET NO. 3 OF 15
 DATE: MAR 20, 1984
 SCALE: 1" = 50'
 PROJECT NO. 525-904.10