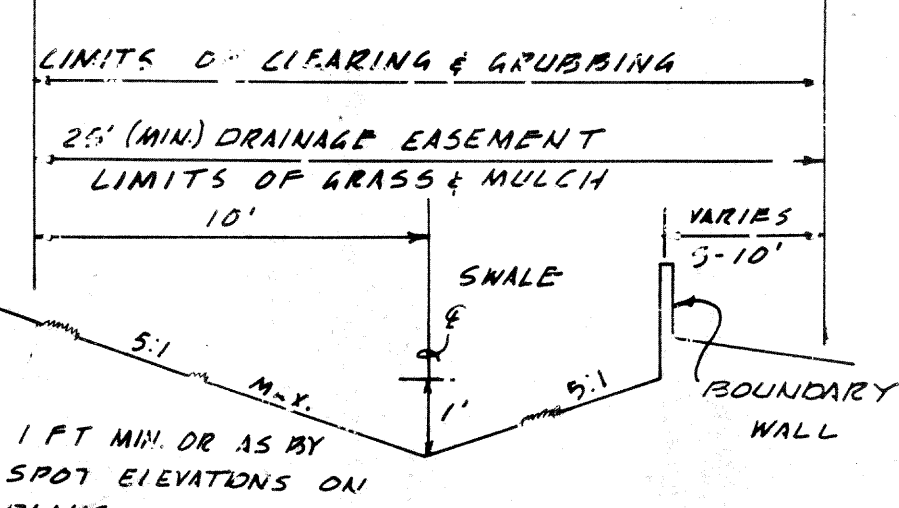
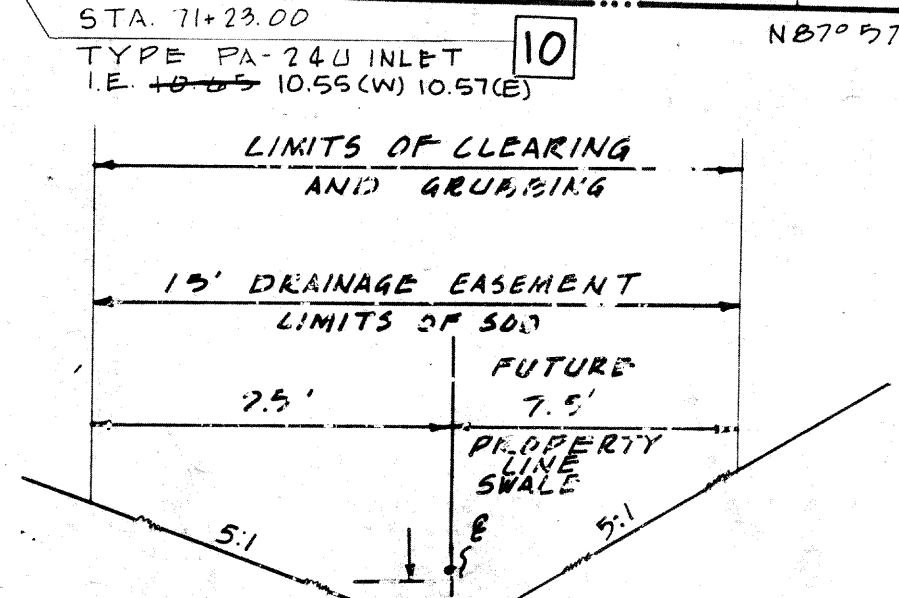
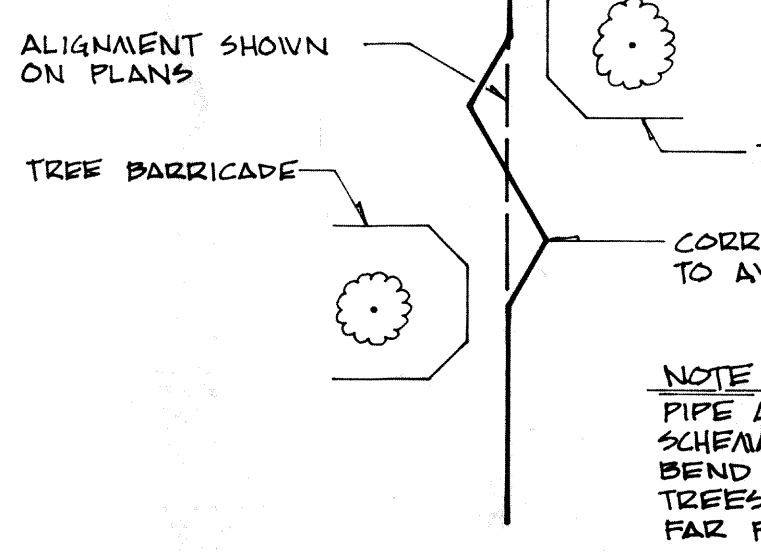


- YARD DRAIN NOTE:**
- 1 YARD DRAIN TO BE PLACED IN LOW SPOT IN TREE HAMMOCK TO BE FIELD VERIFIED BY FIELD ENGINEER.
 - 2 TREES ARE TO BE BARRICADED TO AVOID DAMAGE.
 - 3 UNDERDRAIN TO WARP AROUND TREES.
 - 4 IMPROVEMENTS TO BEGIN UPON WRITTEN PERMISSION OF PROPERTY OWNERS.



NOTE: SEE SHEET 15 FOR PUMP STATION DETAILS
SEE SHEET 3 FOR LEGEND AND GENERAL NOTES

Post, Buckley, Schuh & Jernigan, Inc.
CONSULTING ENGINEERS and PLANNERS

RIDGEMOOR PHASE - 1
SINGLE FAMILY (64 Lots)
U.S. HOME CORPORATION

PAVING, GRADING, STORM SEWER
& SANITARY SEWER SITE PLAN

DESIGN	NOT VALID FOR CONSTRUCTION UNLESS SIGNED IN THIS BLOCK	7-11-85 REV. PER PHILLIPS ONLY ENV. AMNT. REMARKS	10-21-85 REV. WATER RUN-OFF & GRADING	2-14-86 ADDED RECORD DATA	JOB NO. 525-904.10
DRAWN				3-10-84 REV. LATERAL LOCATION - LOT 36	
CHECKED				3-10-84 ADD. ESM'T TO LAKE I-X & I-F	
				6-27-84 REV. SANITARY LOCATION (MHT 7 & 8)	DATE MAR 20, 1984
				6-22-84 REV. EASEMENTS BETWEEN LOTS 35 & 36 AND 29 & 30, ACCORD TO RCP, ADD. TRAFFIC FLOW DIR.	SCALE: 1" = 50'
					SHEET 4 OF 15