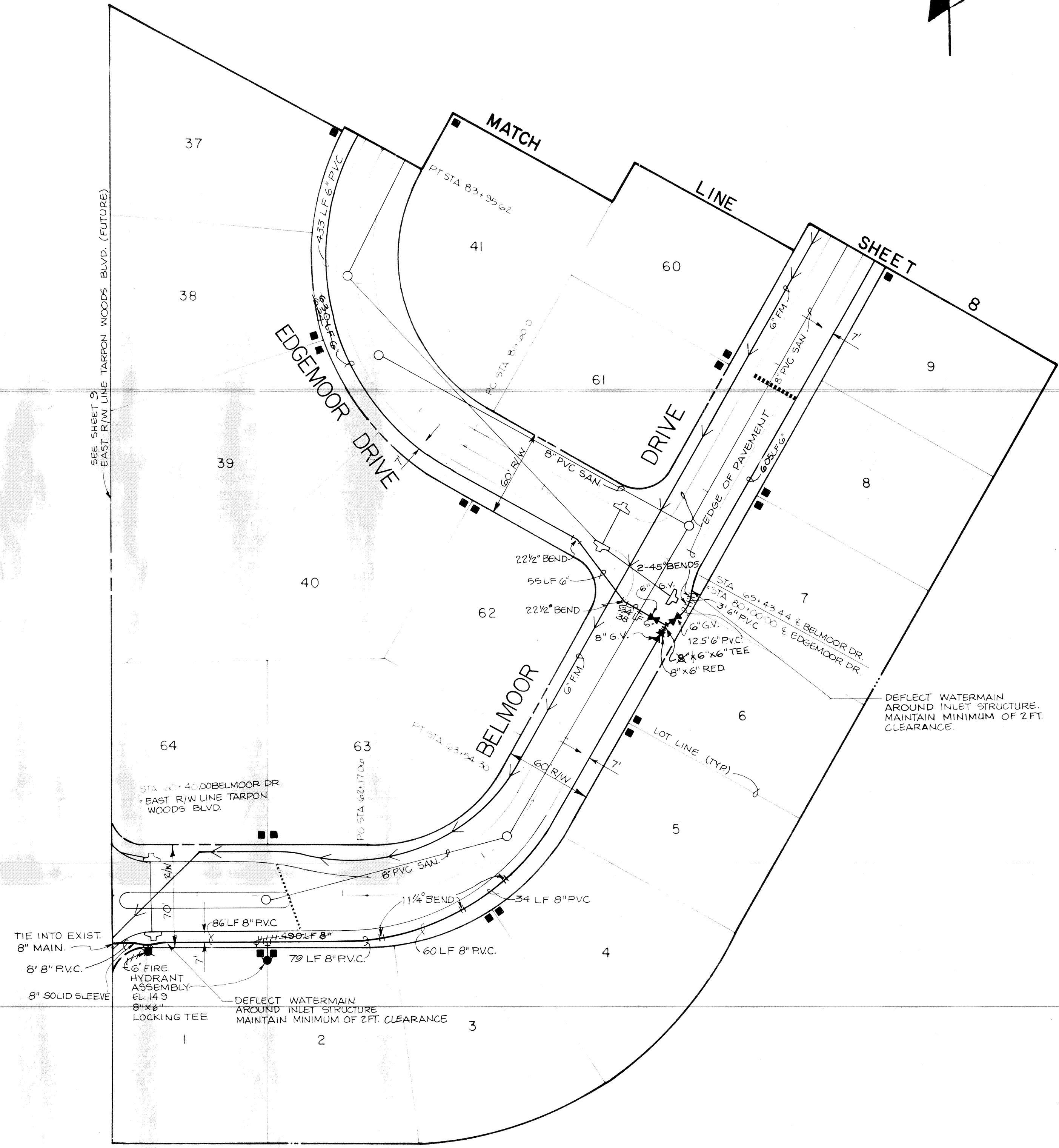


GENERAL NOTES

1. ALL ELEVATIONS REFER TO NATIONAL GEODETIC VERTICAL DATUM.
2. LOCATION OF EXISTING UTILITIES ARE APPROXIMATE AS SHOWN AND IT IS THE CONTRACTOR'S RESPONSIBILITY TO DETERMINE THE EXACT LOCATION OF THE UTILITIES PRIOR TO CONSTRUCTION IN THEIR VICINITY.
3. THE CONTRACTOR SHALL NOTIFY THE UTILITY COMPANIES IN THE AREA BEFORE BEGINNING CONSTRUCTION.
4. ALL UNDERGROUND UTILITIES MUST BE INSTALLED BEFORE BASE & SURFACE ARE CONSTRUCTED.
5. SPECIAL CARE IS TO BE TAKEN SO TREES REMAIN UNHARMED DURING CONSTRUCTION.
6. ALL WATER MAINS ARE PVC.
7. ALL WATER MAIN LENGTHS ARE PLUS OR MINUS.
8. WATER MAIN TO BE 2.5' (MIN.) BELOW PROPOSED GRADE.
9. PIPE MEASUREMENTS ARE CENTER OF FITTINGS.
10. CONFLICTS BETWEEN WATER AND STORM, SANITARY SEWER, UNDERDRAIN SYSTEMS ARE TO BE RESOLVED BY ADJUSTING WATER LINES AS NECESSARY.
11. FITTINGS TO BE USED AS NECESSARY TO MAINTAIN WATER MAIN AT 7' FROM EDGE OF PAVEMENT.



LEGEND

EXISTING		PROPOSED
N/A	WATER LINE	
N/A	FIRE HYDRANT ASSEMBLY	
N/A	STORM SEWER W/INLET	
N/A	SANITARY SEWER W/MANHOLE	
N/A	GATE VALVE	
N/A	METER LOCATION (BY OTHERS)	
N/A	2" PVC CONDUIT	

Post, Buckley, Schuh & Jernigan, Inc.
CONSULTING ENGINEERS

RIDGEMOOR PHASE - 1
SINGLE FAMILY (64 Lots)
U.S. HOME CORPORATION

WATER SUPPLY SITE PLAN

525-904.10	MAR 20, 1984	7	15
REV. PER PINELLAS CO. WATER SYSTEM	SCALE: 1"=50'		
REV. WATER PER PINELLAS CO.			